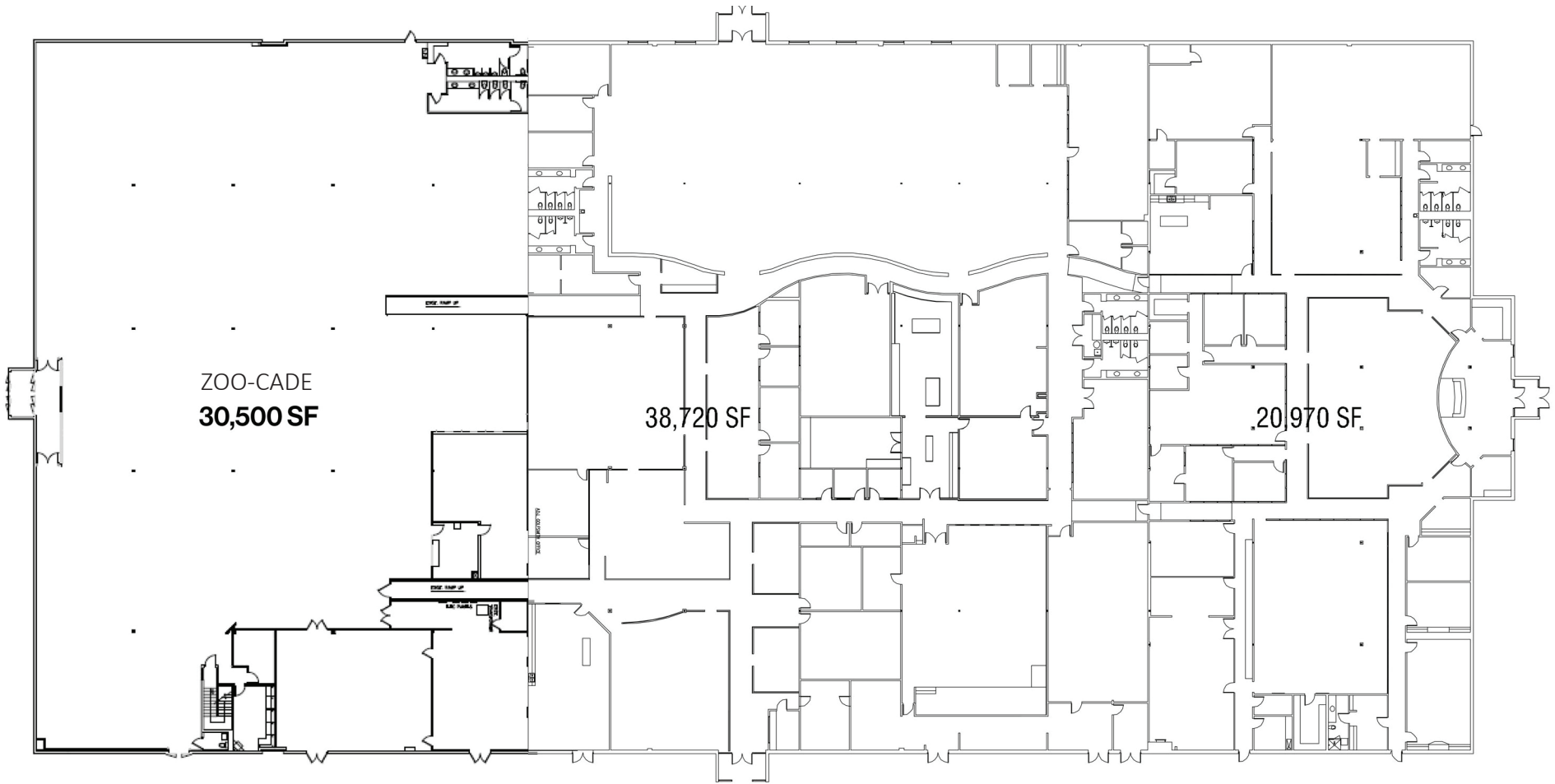


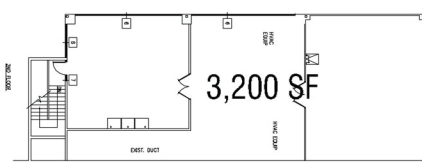
BUILDING A

93,390 SF

DIVISIBLE TO 20,970 SF



GROUND FLOOR PLAN



MEZZANINE FLOOR  
(Mechanical/Aircon Rooms)

11000 MIDDLE FISKVILLE | 11000 MIDDLE FISKVILLE RD, AUSTIN , TX 78753

BUILDING C

49,500 SF

2 DOCK-HIGH DOORS

MINIMAL OFFICE  
REMAINDER HOT WAREHOUSE

FLEXIBLE TERM

